

ST - Series Sky Tiles

LED Ceiling Tile

600x600mm – 4.4KG

P4.68 – 128x128 pixels

Retro – Fit for replacing tiles

Sky Tiles

Cabinet view & size



Size: 600 x 600 mm

Weight: 4.4kg

Pitch: 4.6875 mm

Res: 128 x 128 px

Weight: 4.4KG/panel

Super light box

The weight of the box is only 4.4kg



Ultra light cabinet



Ultra-thin structure



Ultra wide Angle of view

Viewing Angle H160°/ V160°



Capture every detail without
color cast or image distortion,
Even if viewing from the side.



Practical and Creative

Compatible with all 600x600mm tile rails.

Put it anywhere on the ceiling.
Make your ceiling more creative.
Display on your ceiling.

Sky Tiles have passed fire safety tested and comply to both TP(a) and TP(b) standards.

LOUNGE

Practical and Creative

They can also be used on walls for advertising and display purposes.

Plus, it can also be used to mimic a window looking out into fields when the room has no natural light.

Practical and Creative

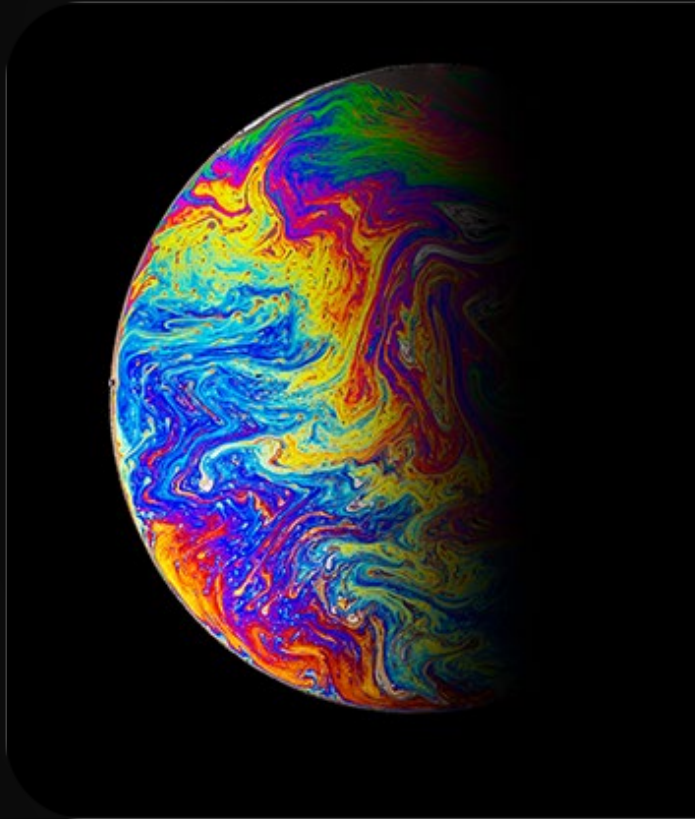
Sky Tiles Display can be used as single or multiple units. Where more than one is installed, the overall image / photo is split between the number of panels you want to give you a real life ceiling screen.



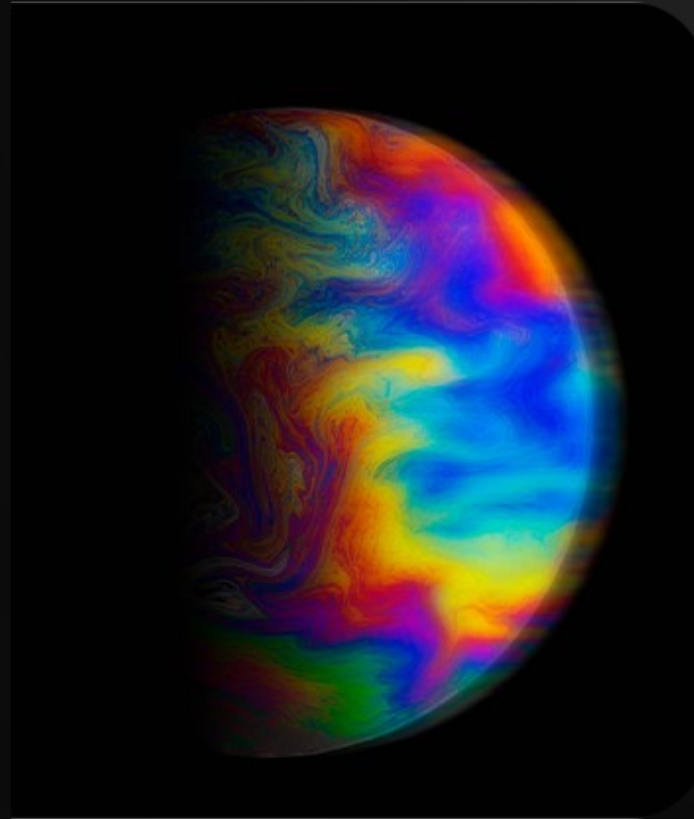
SHOP



$\geq 3840\text{Hz}$



Skytiles series display
High refresh rate



Conventional display screen
Low frequency refresh rate


High-definition screens

Panoramic vision restores true colors

Sky Tiles series
display

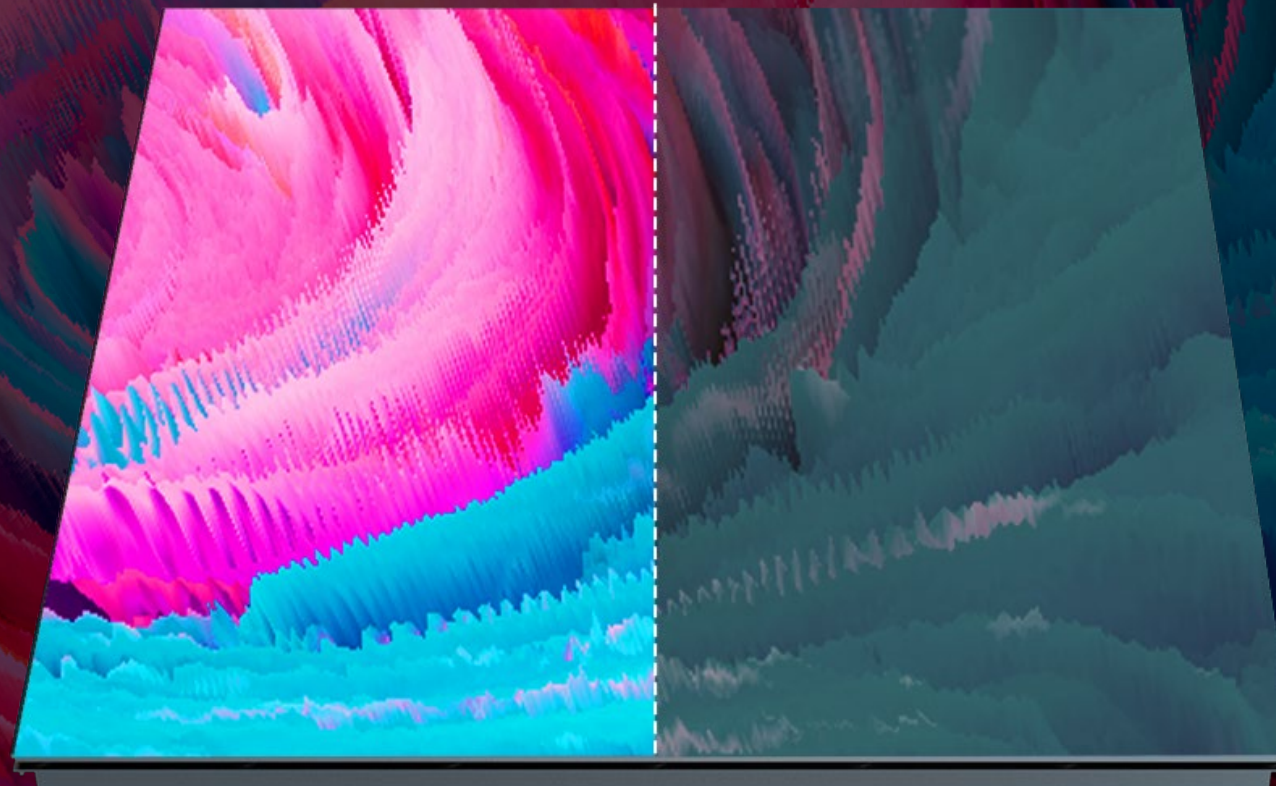
Conventional
display screen /
With PC-Glass Plate

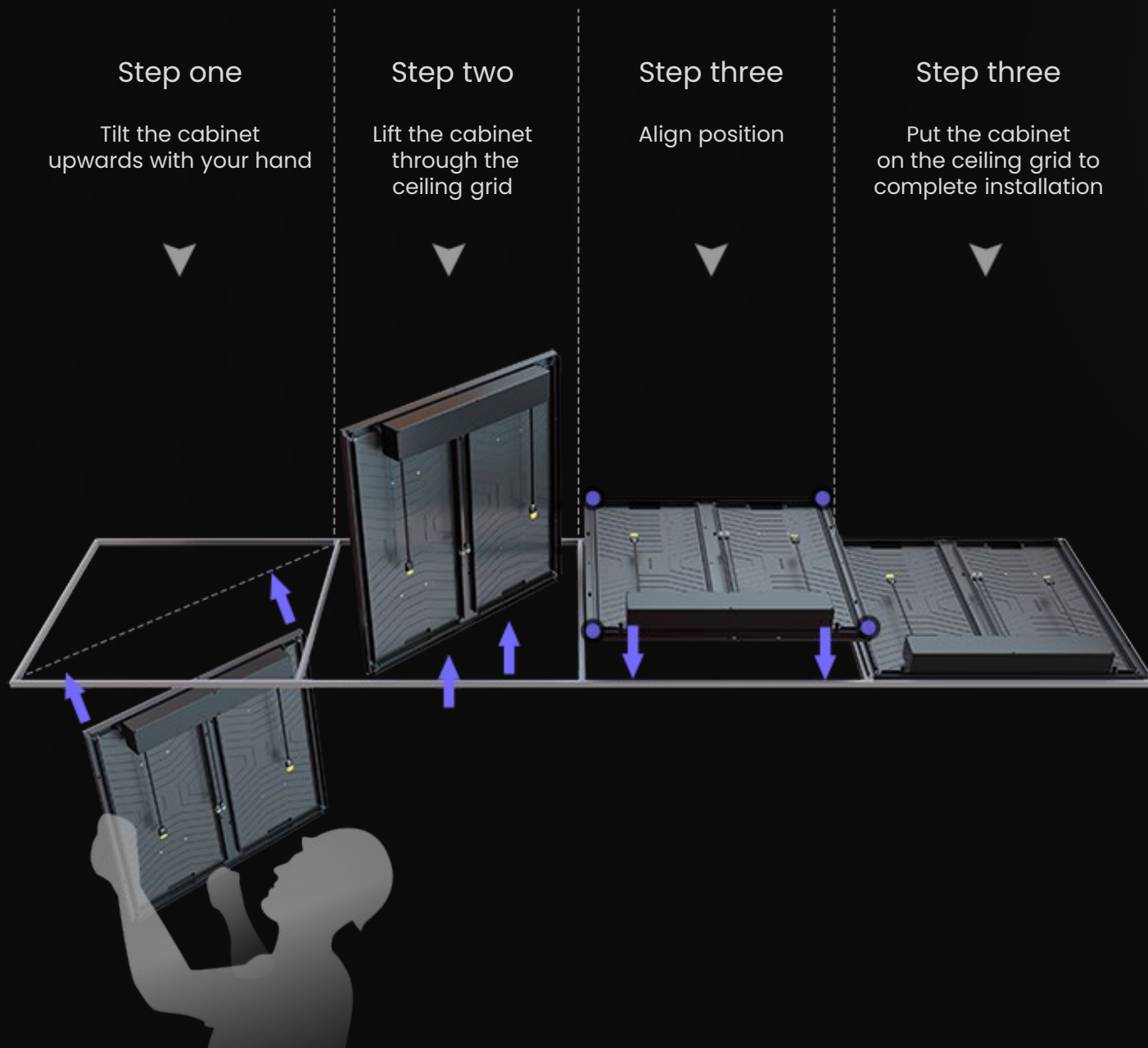


 brightness : ≥ 250 nits

 contrast : $\geq 3000:1$

High brightness with
outstanding contrast
Offer you the best visual experience





Easy to install

Serial Connection for Power

Serial Connection for Signal

Mapping Software for different positions

Four simple steps to replace your ceiling



Detail Specification

Find Everything You Need



Pitch	P4.6875
LED Type	SMD
Density	45511 dot/m ²
Module size (W x H)	600 x 300mm
Cabinet size (W x H x D)	600 x 600 x 80mm
Weight (pcs)	4.4kg
Material	Aluminum Alloy
Contrast	≥ 3000:1
Scan mode	1/32 Scan
Brightness	≥ 250nits
Gray scale	≥ 13bit
Refresh rate	≥ 3660Hz
Viewing angle	H 160° / V 160°
Color temperature	6500k
Maintenance	Front
IP rate	IP43
Max Power consumption	450W/m ²
Average Power consumption	150W/m ²
Supply voltage	AC 200-240V
Max number of connections	20
Signal Input	Options

